

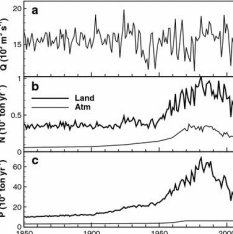


Progress towards Maximum Allowable Inputs (MAI) and Country-Allocated Reduction Targets (CART) in Latvia

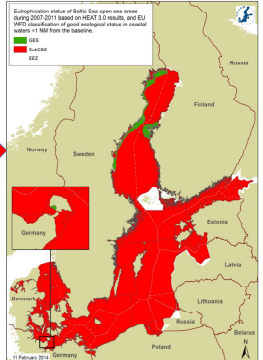
Ilga Kokorīte
 Senior specialist
 Latvian Environment, Geology and Meteorology Centre

Background: eutrophication



Excessive loads of nitrogen and phosphorus in the 20th century
(Gustafsson et al. 2012)



HELCOM, 2014. Eutrophication status of the Baltic Sea 2007-2011

Baltic Sea Action Plan (2007)




to restore the good ecological status of the Baltic marine environment by 2021

ECOLOGICAL OBJECTIVES

- Concentrations of nutrients close to natural levels;
- Clear water;
- Natural level of algal blooms;
- Natural distribution and occurrence of plants and animals;
- Natural oxygen levels.



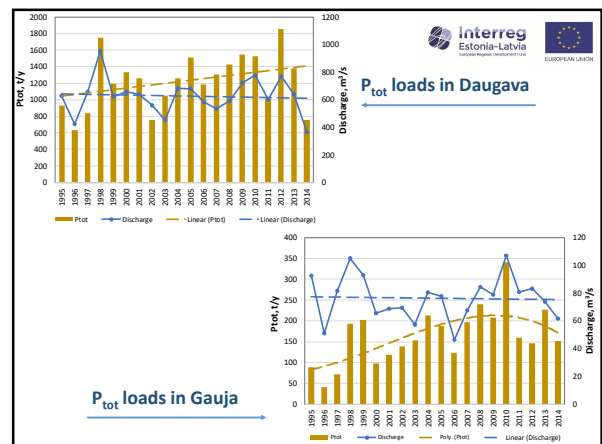
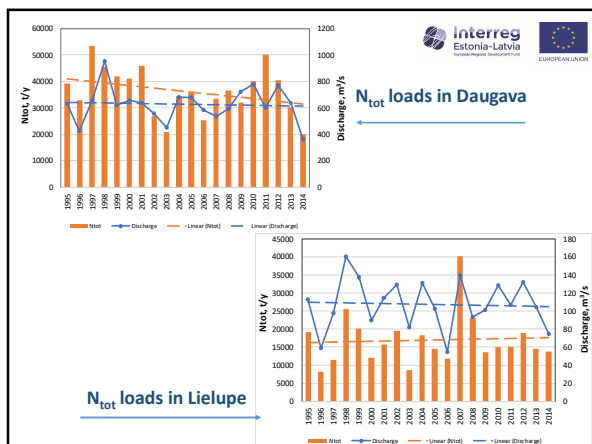
Photo: Christopher Volius

HELCOM Country Allocated Reduction Targets and input ceilings for Latvia (t/year)

NITROGEN	BALTIC PROPER	GULF OF RIGA
Reference inputs (1997-2003)	7 736	52 853
CART	1 645	0
Input ceilings	6 091	52 898
Input in 2014	10 489	43 228

PHOSPHORUS	BALTIC PROPER	GULF OF RIGA
Reference inputs (1997-2003)	203	627
CART	129	86
Input ceilings	74	541
Input in 2014	295	1 018

Helcom (2017) Draft policy message on progress towards nutrient input targets



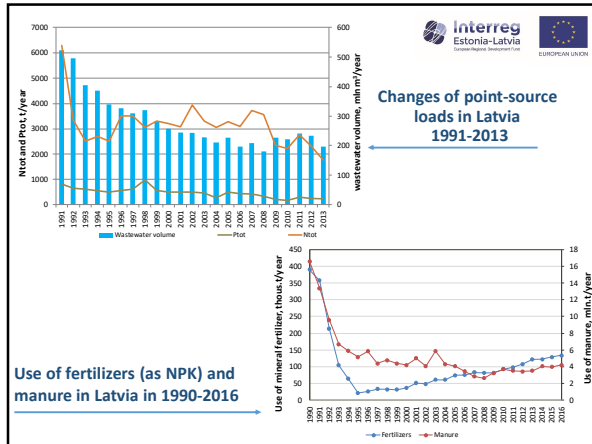


Table 1. Total Nitrogen. Evaluation of input ceilings fulfillment
Based on statistically estimated inputs (scroll down for full legend).

Country/basin	BOB	BOS	BAP	GUF	GUR	DS	KAT
Denmark	↓	↓	↓	↓	↓	↓	↓
Estonia	↓	↓	↓	↓	↓	↓	↓
Finland	↓	↓	↓	↓	↓	↓	↓
Germany	↓	↓	↓	↓	↓	↓	↓
Latvia	↓	↓	↓	↓	↓	↓	↓
Lithuania	↓	↓	↓	↓	↓	↓	↓
Poland	↓	↓	↓	↓	↓	↓	↓
Russia	↓	↓	↓	↓	↓	↓	↓
Sweden	↓	↓	↓	↓	↓	↓	↓
Belarus			↑				
Czech Republic			↑				
Ukraine			↑				
Baltic Sea shipping			↑				
Other countries	↓	↓	↓	↓	↓	↓	↓
MAI	↓	↓	↓	↓	↓	↓	↓

Helcom (2017) Draft policy message on progress towards nutrient input targets

Table 2. Total Phosphorus. Evaluation of input ceilings
Based on statistically estimated inputs.

Country/basin	BOB	BOS	BAP	GUF	GUR	DS	KAT
Denmark			↓				↓
Estonia			↓	↓			
Finland	↓						
Germany			↓				
Latvia			↓	↓			
Lithuania			↓				
Poland			↓				
Russia			↓	↓			
Sweden	↓	↓	↓			↓	
Belarus			↑				
Czech Republic			↑				
Ukraine			↑				
Baltic Sea shipping			↑				
Other countries			↓				
MAI		↓	↓	↓	↓	↓	↓

Helcom (2017) Draft policy message on progress towards nutrient input targets

Interreg Estonia-Latvia
European Regional Development Fund

EUROPEAN UNION

Thank you for your attention!